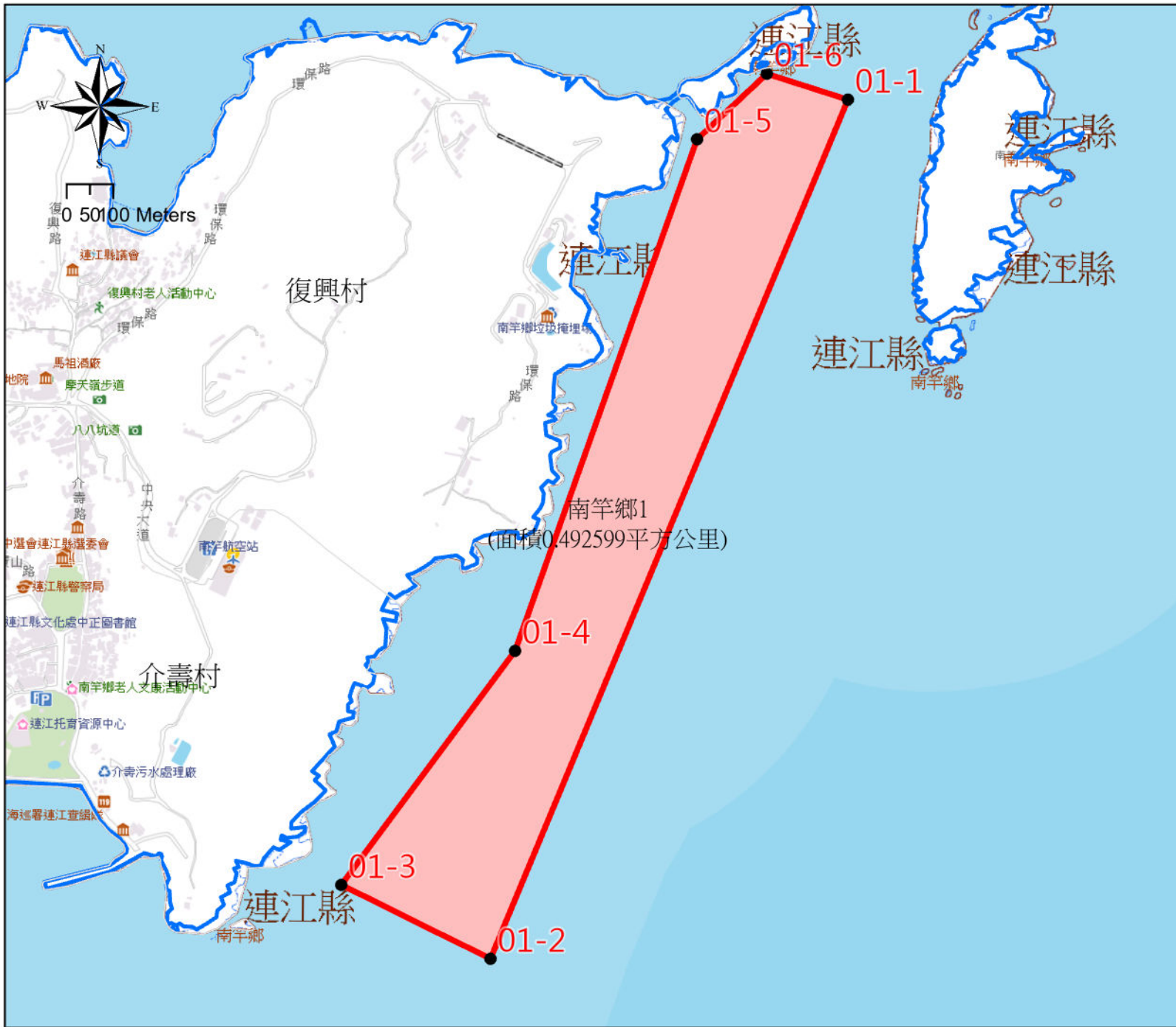
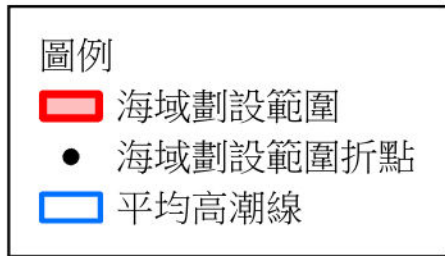


# 連江縣區劃漁業權海域範圍圖-編號1(南竿鄉1)

## 海域範圍折點坐標

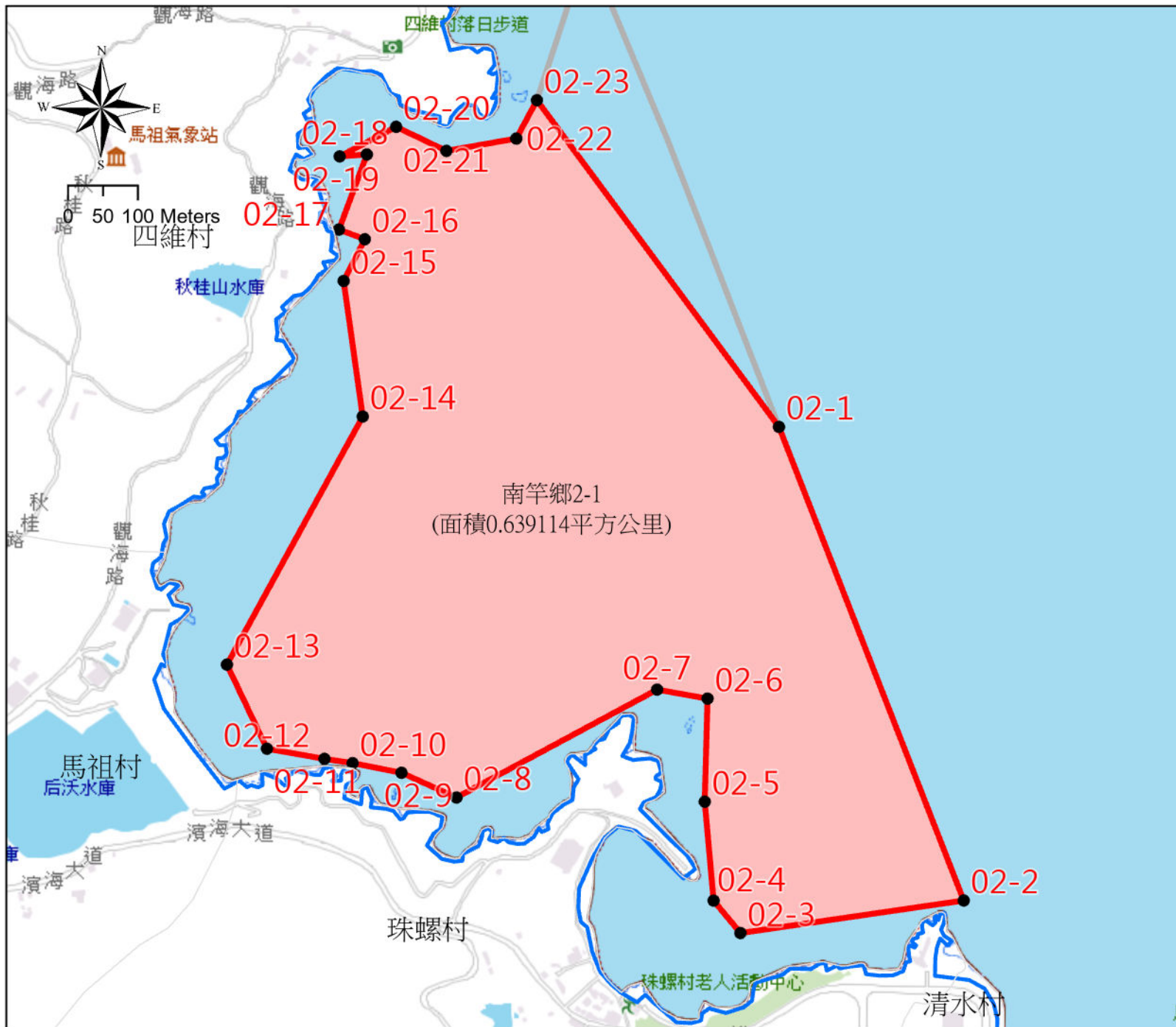


折點編號	N	E
01-1	26° 10' 0.84" N	119° 58' 7.27" E
01-2	26° 09' 0.69" N	119° 57' 40.18" E
01-3	26° 09' 5.76" N	119° 57' 28.61" E
01-4	26° 09' 22.19" N	119° 57' 41.89" E
01-5	26° 09' 57.99" N	119° 57' 55.63" E
01-6	26° 10' 2.6" N	119° 58' 0.99" E



# 連江縣區劃漁業權海域範圍圖-編號2(南竿鄉2-1)

## 海域範圍折點坐標



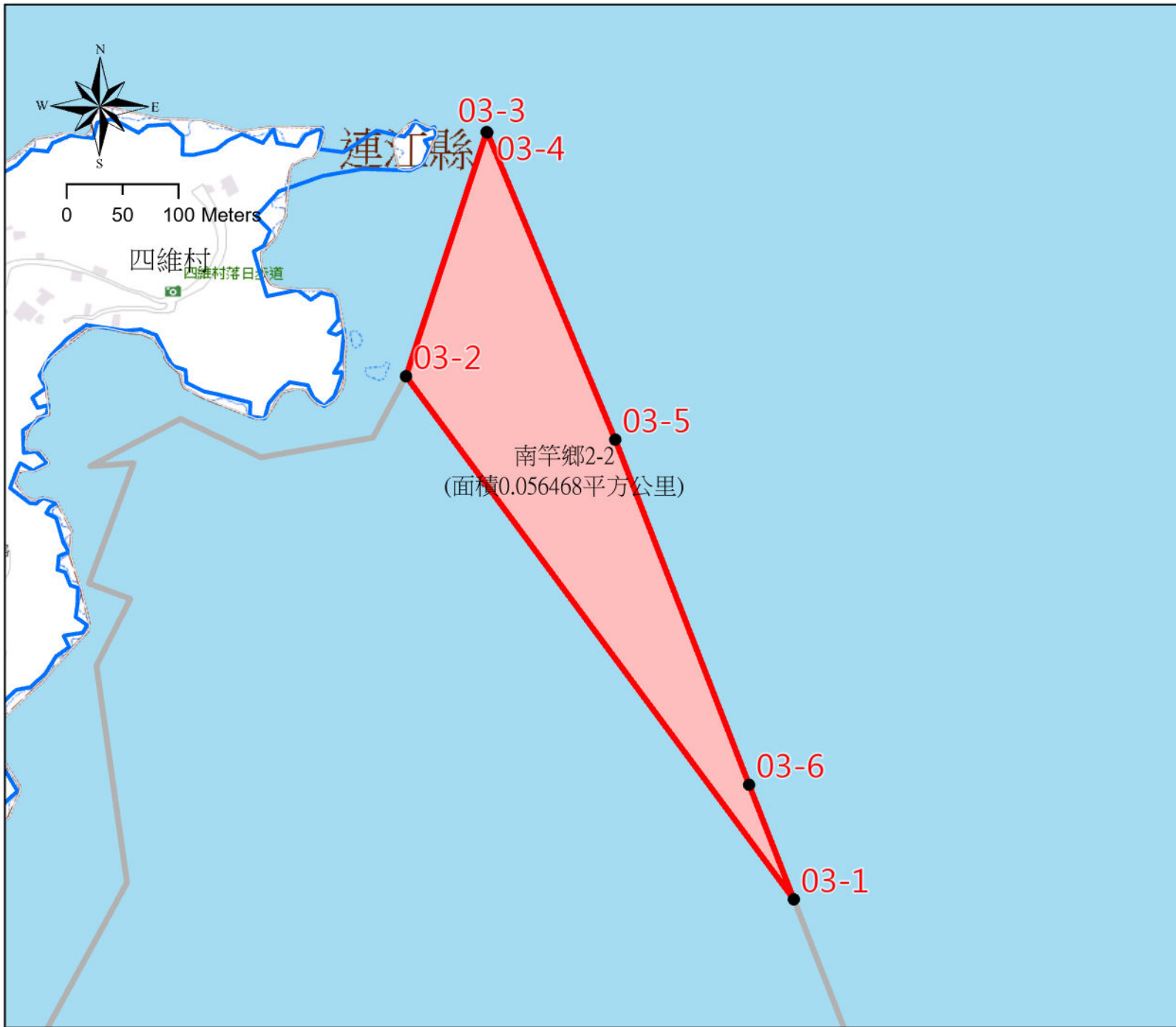
折點編號	N	E
02-1	26° 09' 56.88" N	119° 55' 57.17" E
02-2	26° 09' 34.9" N	119° 56' 6.9" E
02-3	26° 09' 33.3" N	119° 55' 55.4" E
02-4	26° 09' 34.8" N	119° 55' 54.0" E
02-5	26° 09' 39.4" N	119° 55' 53.5" E
02-6	26° 09' 44.2" N	119° 55' 53.6" E
02-7	26° 09' 44.6" N	119° 55' 51.0" E
02-8	26° 09' 39.5" N	119° 55' 40.7" E
02-9	26° 09' 40.63" N	119° 55' 37.85" E
02-10	26° 09' 41.06" N	119° 55' 35.32" E
02-11	26° 09' 41.25" N	119° 55' 33.87" E
02-12	26° 09' 41.7" N	119° 55' 30.9" E
02-13	26° 09' 45.6" N	119° 55' 28.8" E
02-14	26° 09' 57.2" N	119° 55' 35.7" E
02-15	26° 10' 3.5" N	119° 55' 34.66" E
02-16	26° 10' 5.45" N	119° 55' 35.73" E
02-17	26° 10' 5.89" N	119° 55' 34.39" E
02-18	26° 10' 9.4" N	119° 55' 35.8" E
02-19	26° 10' 9.3" N	119° 55' 34.4" E
02-20	26° 10' 10.7" N	119° 55' 37.3" E
02-21	26° 10' 9.6" N	119° 55' 39.9" E
02-22	26° 10' 10.2" N	119° 55' 43.5" E
02-23	26° 10' 11.99" N	119° 55' 44.55" E

**圖例**

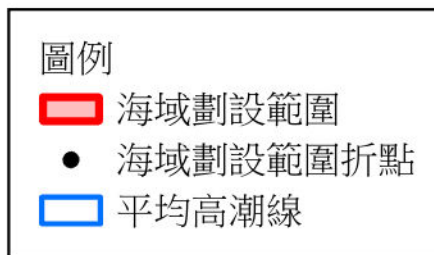
- ▭ 海域劃設範圍
- 海域劃設範圍折點
- ▭ 平均高潮線

# 連江縣區劃漁業權海域範圍圖-編號3(南竿鄉2-2)

## 海域範圍折點坐標

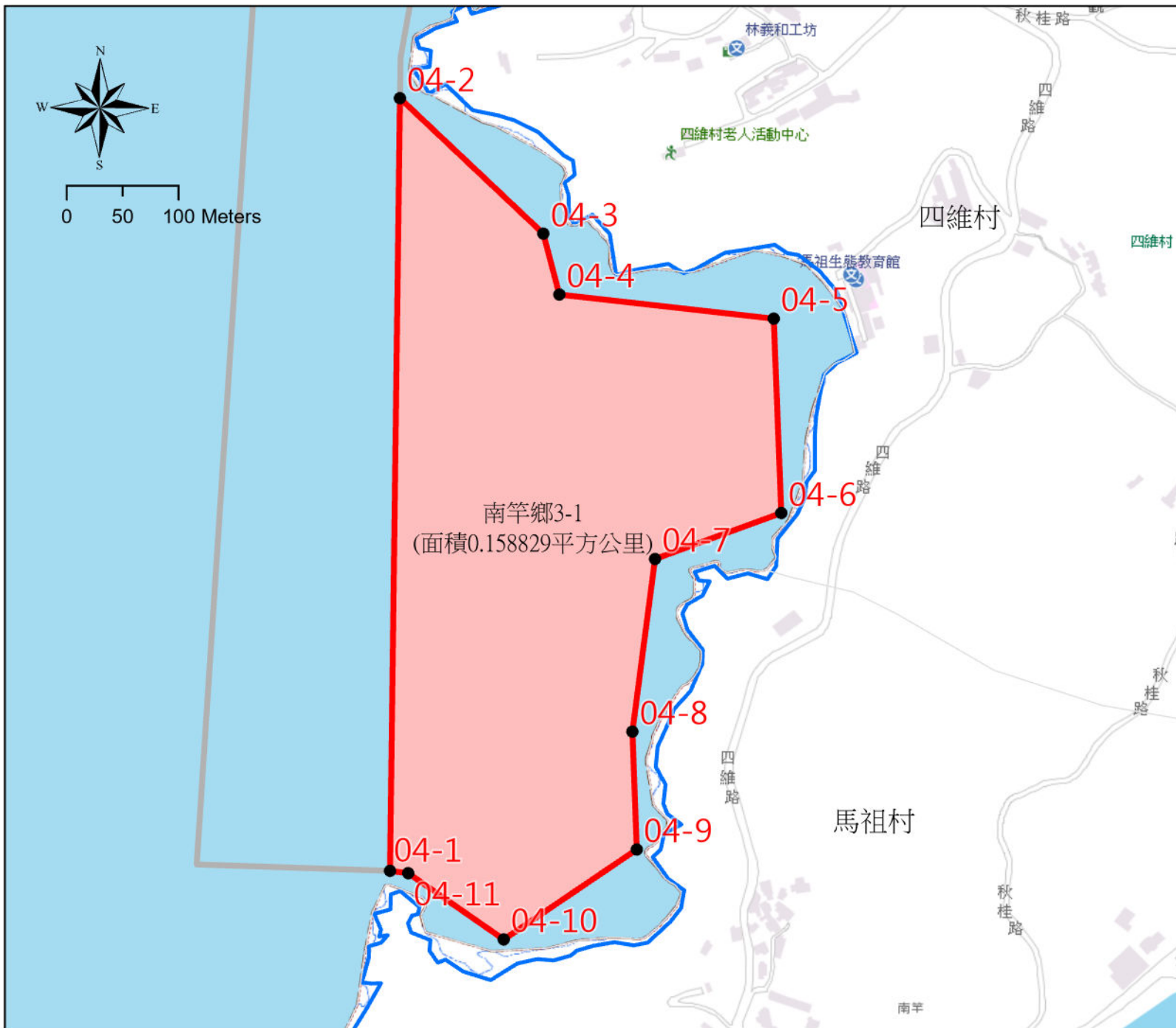


折點編號	N	E
03-1	26° 09' 56.88" N	119° 55' 57.17" E
03-2	26° 10' 11.99" N	119° 55' 44.55" E
03-3	26° 10' 19.11" N	119° 55' 47.08" E
03-4	26° 10' 19.1" N	119° 55' 47.1" E
03-5	26° 10' 10.2" N	119° 55' 51.3" E
03-6	26° 10' 0.2" N	119° 55' 55.7" E



# 連江縣區劃漁業權海域範圍圖-編號4(南竿鄉3-1)

## 海域範圍折點坐標



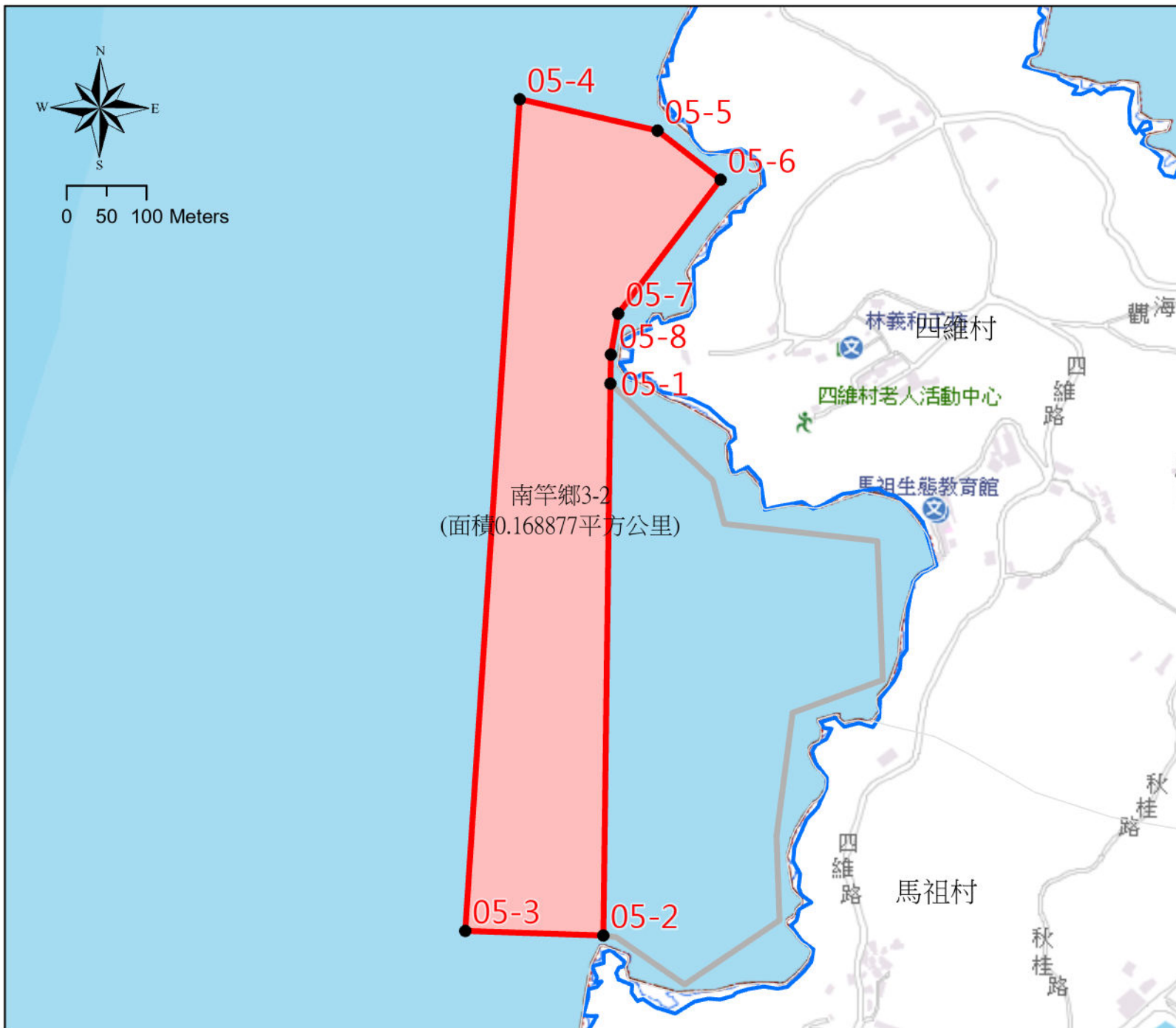
折點編號	N	E
04-1	26° 09' 46.73" N	119° 54' 54.14" E
04-2	26° 10' 9.19" N	119° 54' 54.25" E
04-3	26° 10' 5.29" N	119° 54' 58.9" E
04-4	26° 10' 3.52" N	119° 54' 59.44" E
04-5	26° 10' 2.87" N	119° 55' 6.35" E
04-6	26° 09' 57.23" N	119° 55' 6.64" E
04-7	26° 09' 55.86" N	119° 55' 2.59" E
04-8	26° 09' 50.84" N	119° 55' 1.91" E
04-9	26° 09' 47.41" N	119° 55' 2.08" E
04-10	26° 09' 44.76" N	119° 54' 57.82" E
04-11	26° 09' 46.67" N	119° 54' 54.73" E

**圖例**

- 海域劃設範圍
- 海域劃設範圍折點
- 平均高潮線

# 連江縣區劃漁業權海域範圍圖-編號5(南竿鄉3-2)

## 海域範圍折點坐標



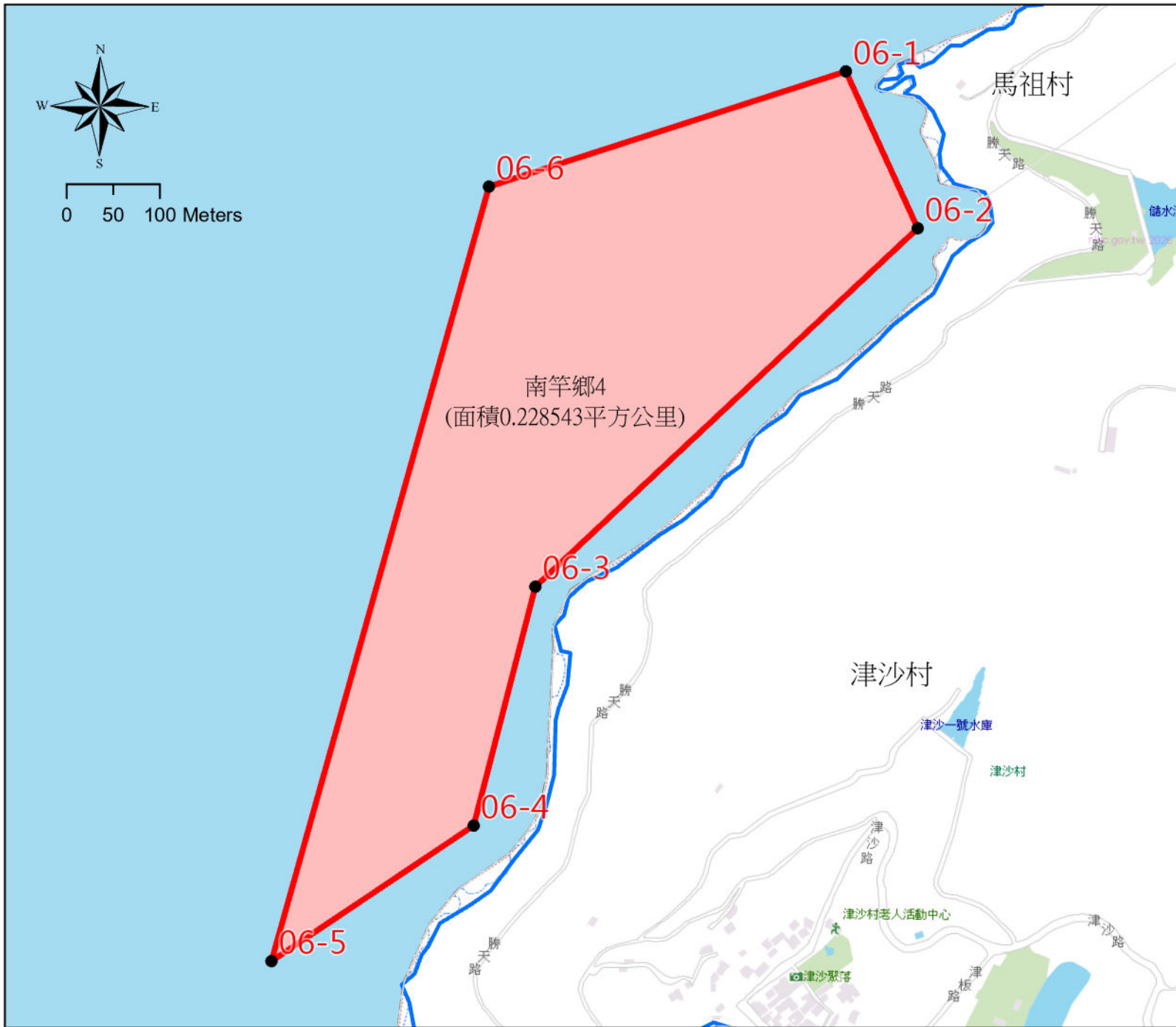
折點編號	N	E
05-1	26° 10' 9.19" N	119° 54' 54.25" E
05-2	26° 09' 46.73" N	119° 54' 54.14" E
05-3	26° 09' 46.87" N	119° 54' 47.92" E
05-4	26° 10' 20.73" N	119° 54' 50.06" E
05-5	26° 10' 19.5" N	119° 54' 56.28" E
05-6	26° 10' 17.53" N	119° 54' 59.14" E
05-7	26° 10' 12.04" N	119° 54' 54.58" E
05-8	26° 10' 10.37" N	119° 54' 54.26" E

**圖例**

- 海域劃設範圍
- 海域劃設範圍折點
- 平均高潮線

# 連江縣區劃漁業權海域範圍圖-編號6(南竿鄉4)

## 海域範圍折點坐標



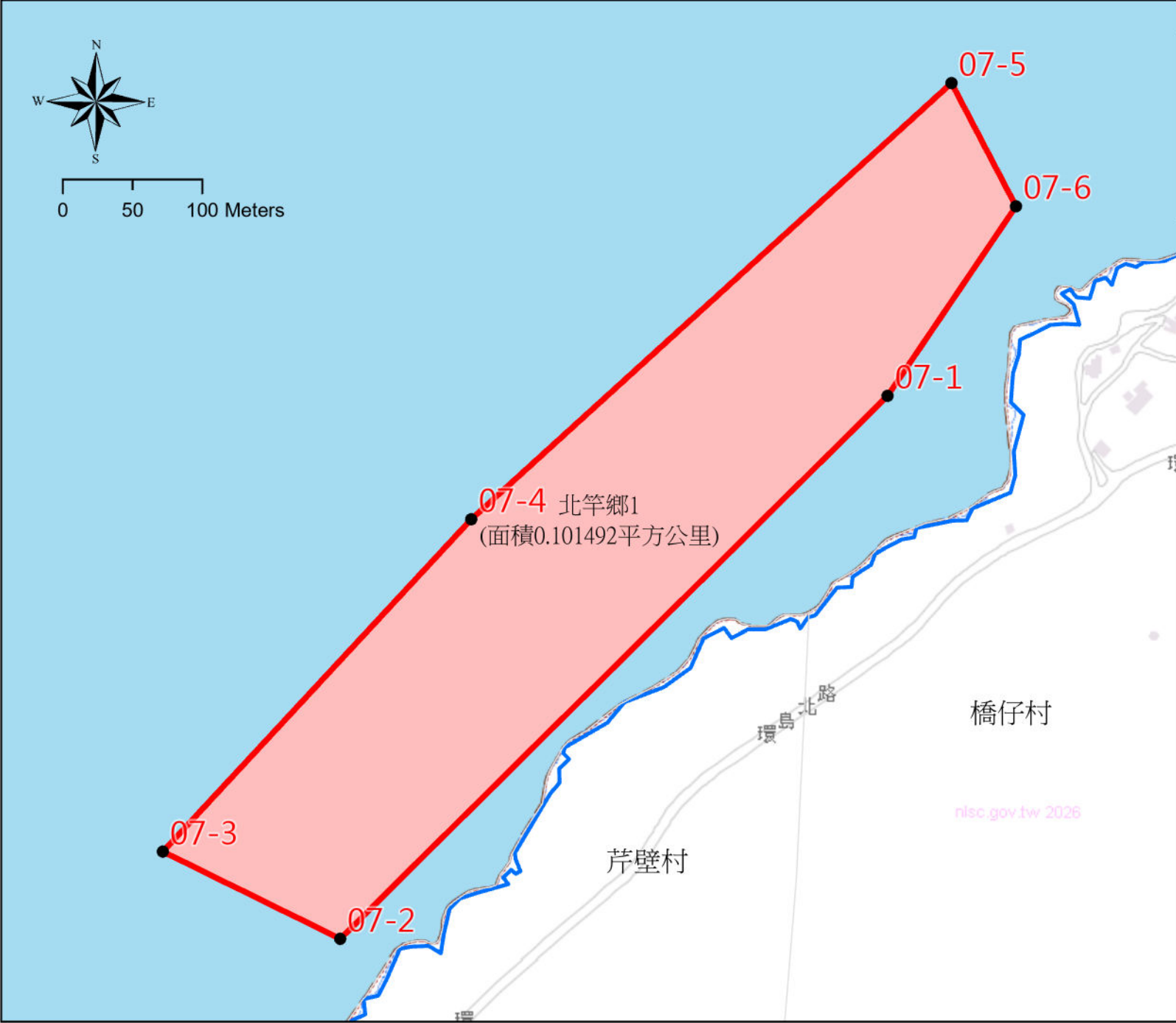
折點編號	N	E
06-1	26° 09' 17.22" N	119° 54' 49.09" E
06-2	26° 09' 11.77" N	119° 54' 51.92" E
06-3	26° 08' 59.16" N	119° 54' 37.26" E
06-4	26° 08' 50.8" N	119° 54' 34.96" E
06-5	26° 08' 46.01" N	119° 54' 27.19" E
06-6	26° 09' 13.1" N	119° 54' 35.34" E

**圖例**

- 海域劃設範圍
- 海域劃設範圍折點
- 平均高潮線

# 連江縣區劃漁業權海域範圍圖-編號7(北竿鄉1)

## 海域範圍折點坐標



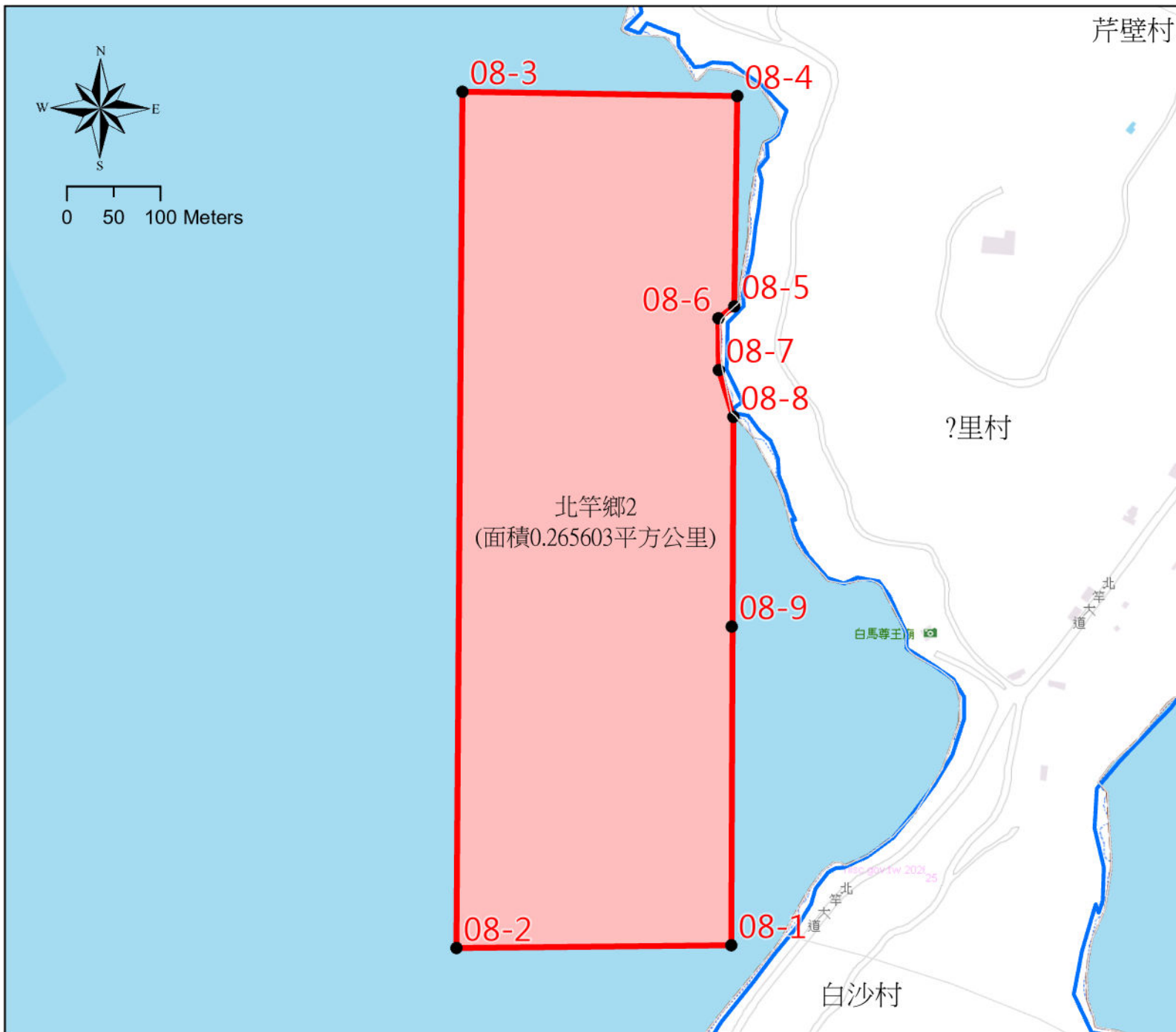
折點編號	N	E
07-1	26° 13' 58.95" N	119° 59' 26.43" E
07-2	26° 13' 46.2" N	119° 59' 12.4" E
07-3	26° 13' 48.2" N	119° 59' 7.8" E
07-4	26° 13' 56.0" N	119° 59' 15.7" E
07-5	26° 14' 6.25" N	119° 59' 28.02" E
07-6	26° 14' 3.39" N	119° 59' 29.71" E

**圖例**

- 海域劃設範圍
- 海域劃設範圍折點
- 平均高潮線

# 連江縣區劃漁業權海域範圍圖-編號8(北竿鄉2)

## 海域範圍折點坐標



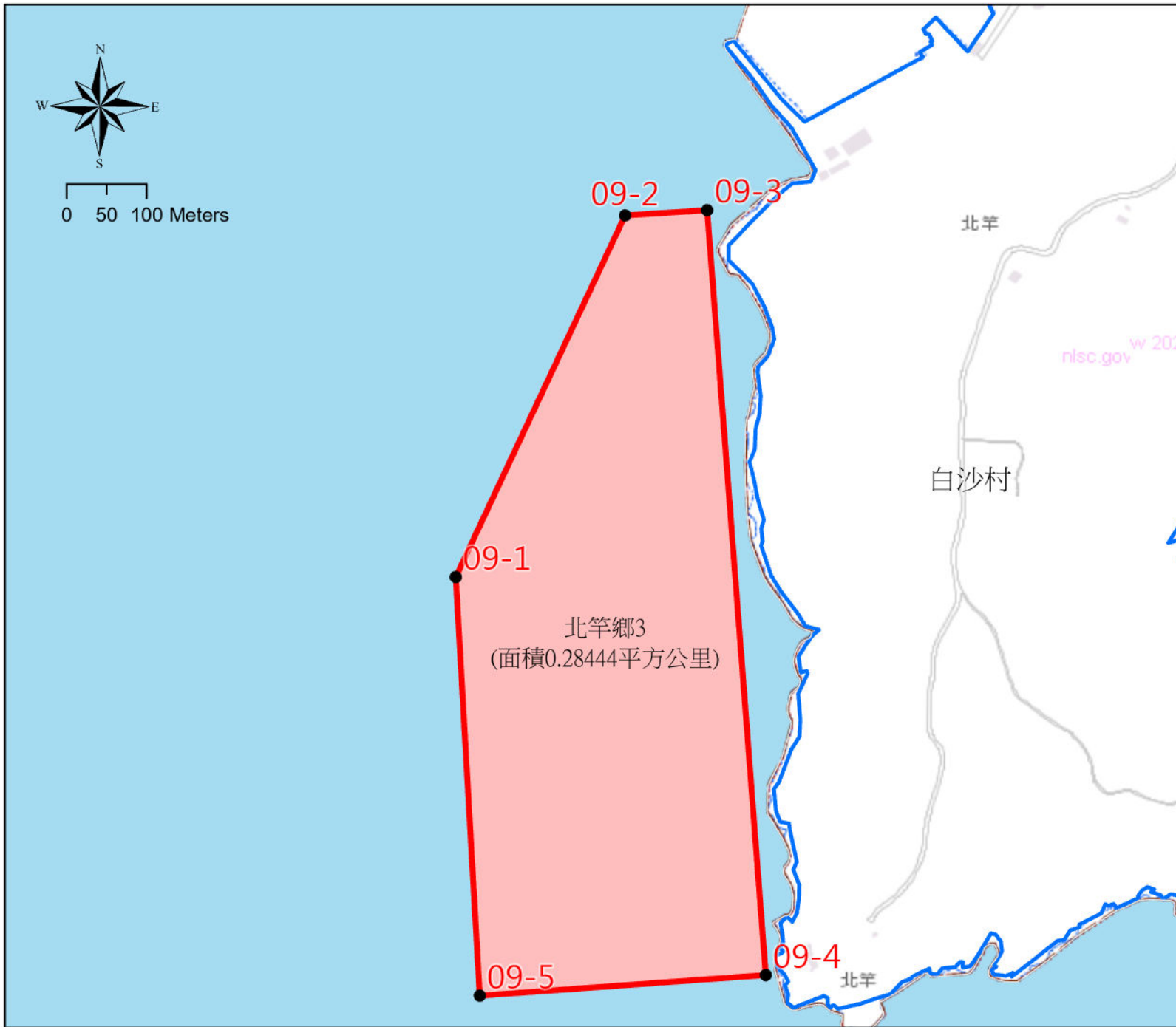
折點編號	N	E
08-1	26° 12' 36.93" N	119° 58' 7.08" E
08-2	26° 12' 36.76" N	119° 57' 56.5" E
08-3	26° 13' 6.51" N	119° 57' 56.47" E
08-4	26° 13' 6.43" N	119° 58' 7.05" E
08-5	26° 12' 59.13" N	119° 58' 7.0" E
08-6	26° 12' 58.71" N	119° 58' 6.39" E
08-7	26° 12' 56.91" N	119° 58' 6.42" E
08-8	26° 12' 55.29" N	119° 58' 7.0" E
08-9	26° 12' 48.0" N	119° 58' 7.0" E

圖例

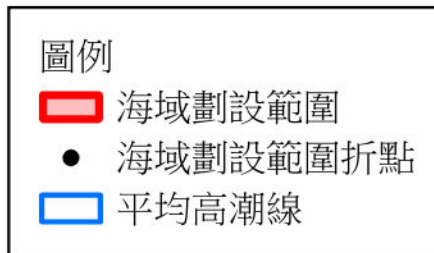
- █ 海域劃設範圍
- 海域劃設範圍折點
- ▬ 平均高潮線

# 連江縣區劃漁業權海域範圍圖-編號9(北竿鄉3)

## 海域範圍折點坐標

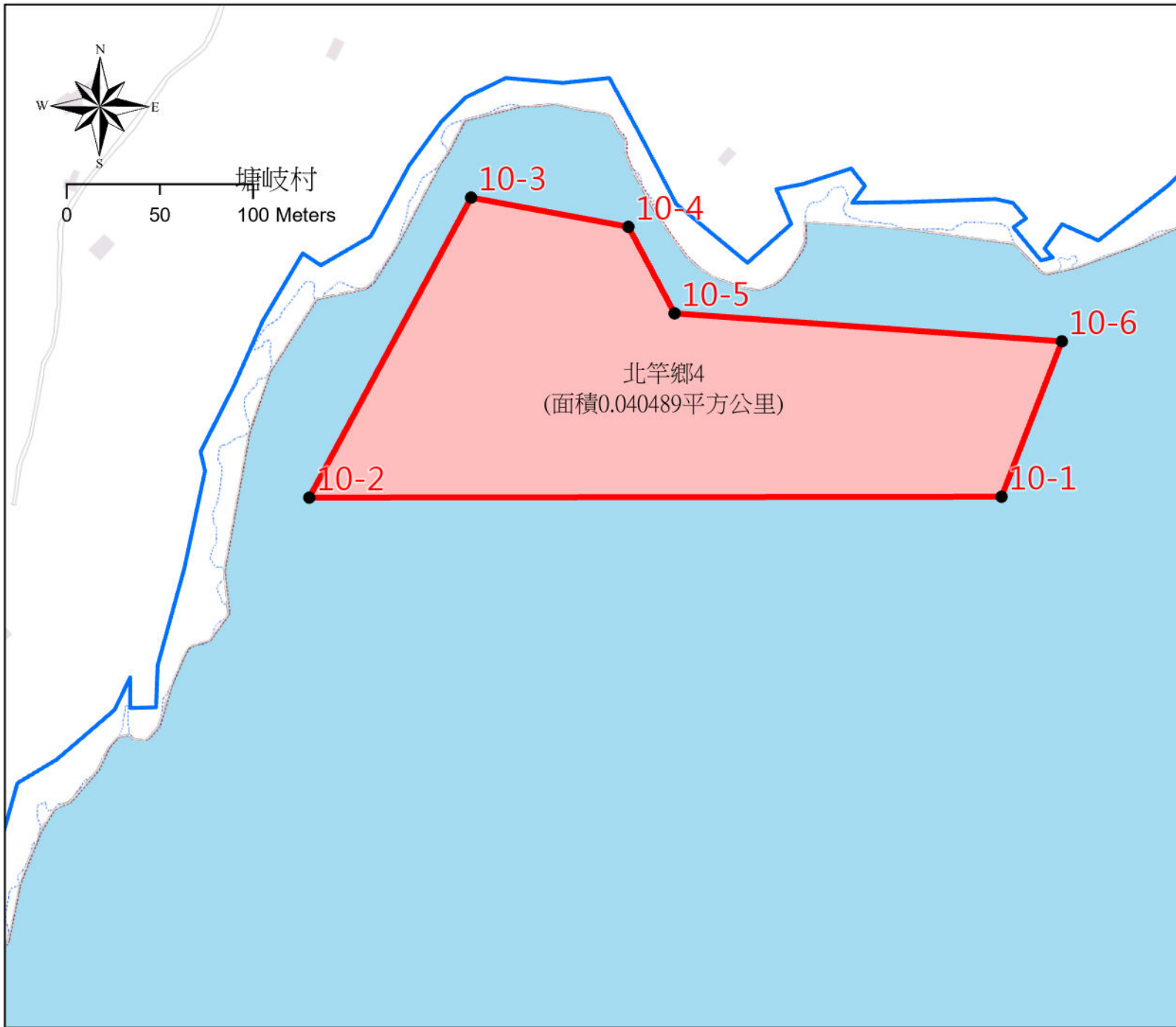


折點編號	N	E
09-1	26° 11' 55.8" N	119° 57' 44.23" E
09-2	26° 12' 10.58" N	119° 57' 51.74" E
09-3	26° 12' 10.82" N	119° 57' 55.43" E
09-4	26° 11' 39.7" N	119° 57' 58.35" E
09-5	26° 11' 38.77" N	119° 57' 45.47" E

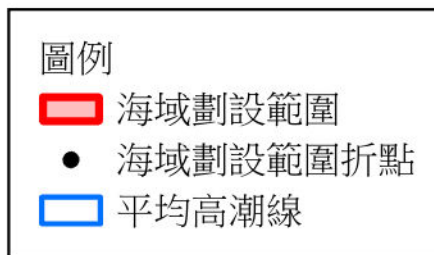


# 連江縣區劃漁業權海域範圍圖-編號10(北竿鄉4)

## 海域範圍折點坐標

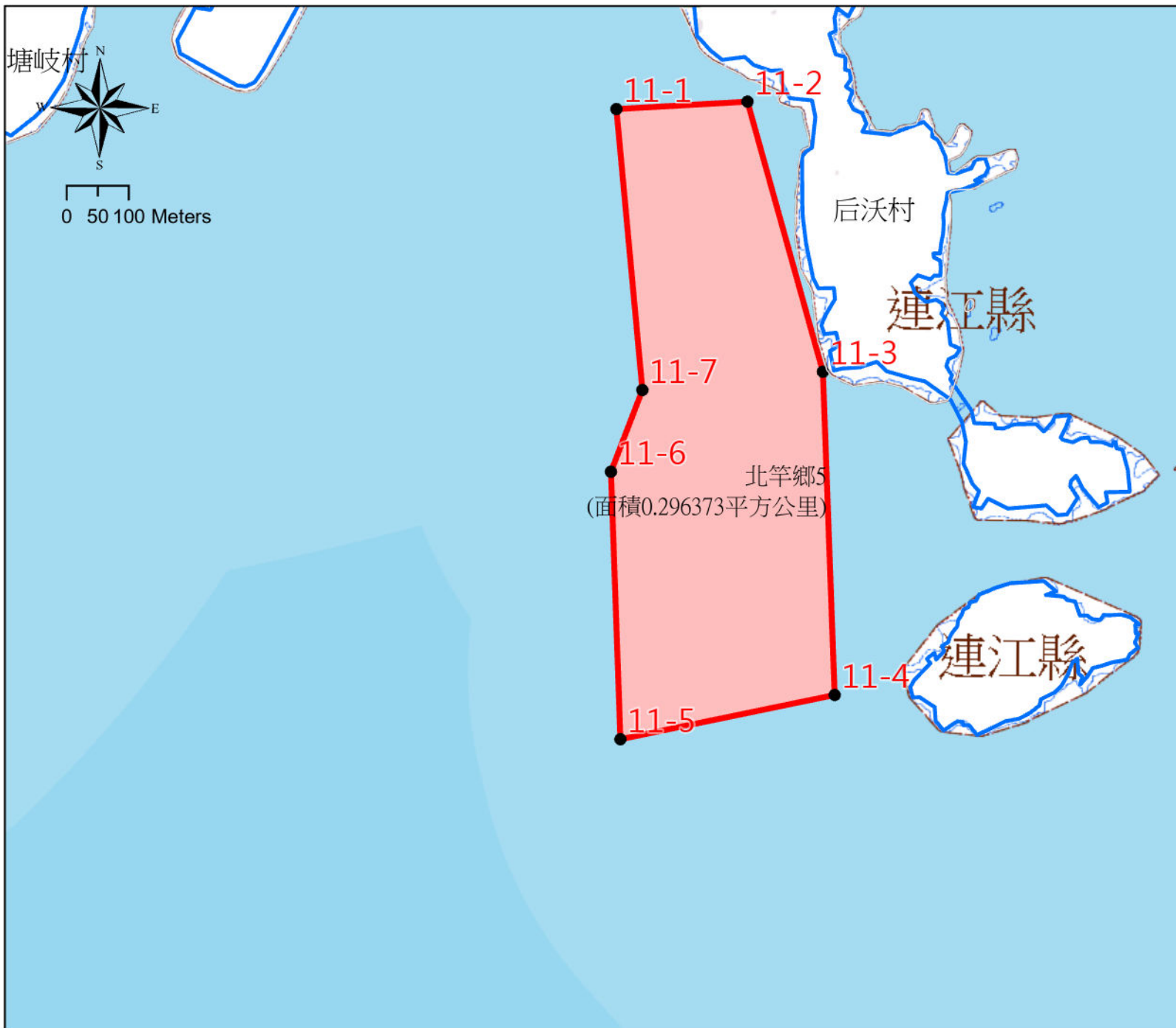


折點編號	N	E
10-1	26° 13' 0.57" N	119° 59' 45.45" E
10-2	26° 13' 0.47" N	119° 59' 32.07" E
10-3	26° 13' 5.72" N	119° 59' 35.15" E
10-4	26° 13' 5.23" N	119° 59' 38.2" E
10-5	26° 13' 3.73" N	119° 59' 39.1" E
10-6	26° 13' 3.29" N	119° 59' 46.59" E



# 連江縣區劃漁業權海域範圍圖-編號11(北竿鄉5)

## 海域範圍折點坐標



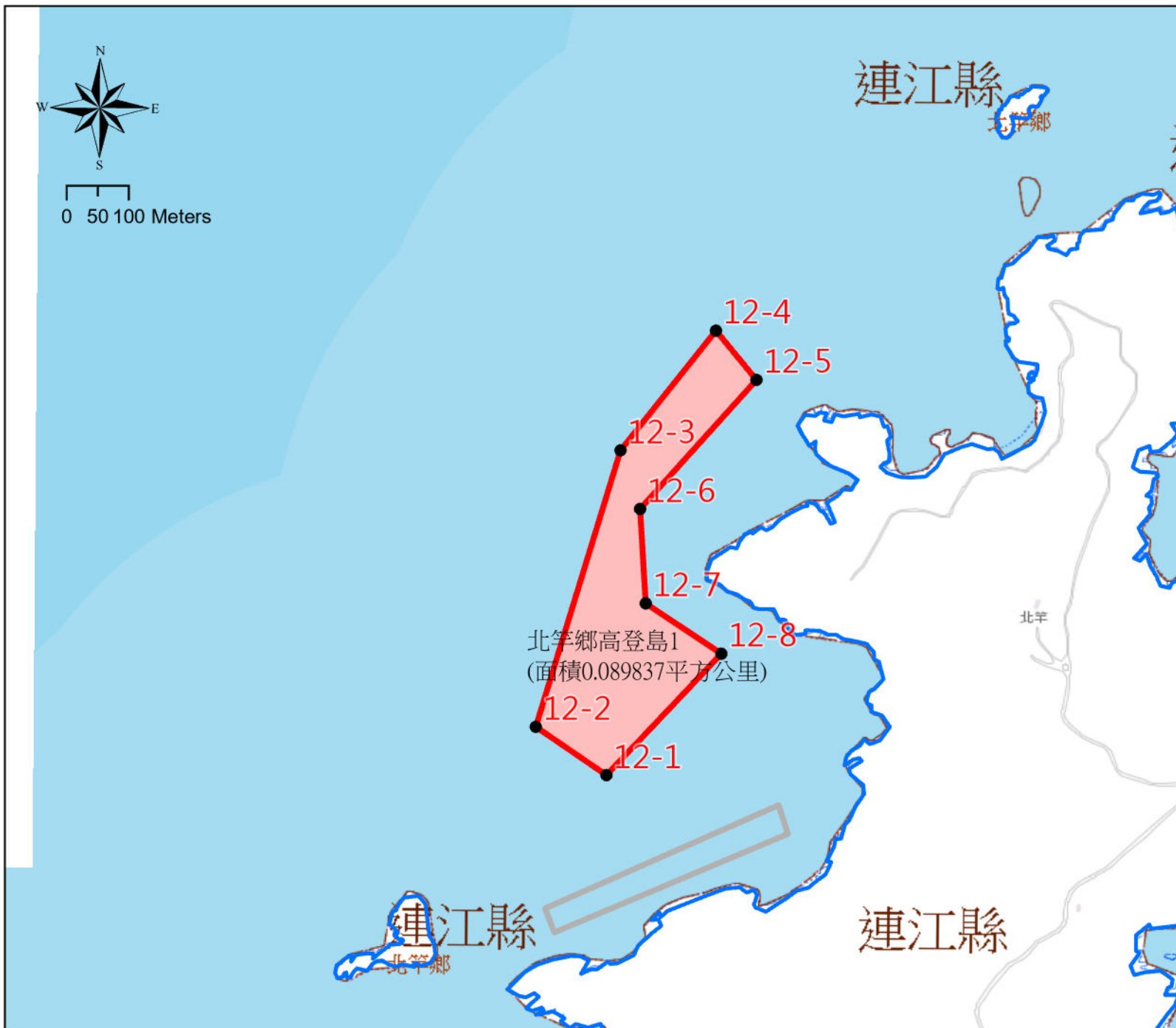
折點編號	N	E
11-1	26° 13' 6.69" N	120° 00' 22.37" E
11-2	26° 13' 7.13" N	120° 00' 29.96" E
11-3	26° 12' 53.03" N	120° 00' 34.46" E
11-4	26° 12' 36.12" N	120° 00' 35.28" E
11-5	26° 12' 33.72" N	120° 00' 22.88" E
11-6	26° 12' 47.71" N	120° 00' 22.21" E
11-7	26° 12' 52.0" N	120° 00' 24.0" E

圖例

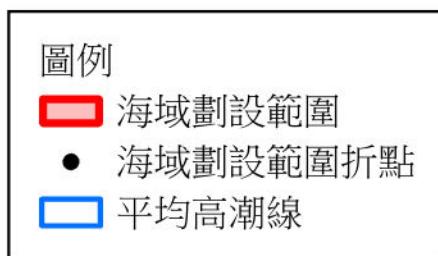
- █ 海域劃設範圍
- 海域劃設範圍折點
- ▭ 平均高潮線

# 連江縣區劃漁業權海域範圍圖-編號12(北竿鄉高登島1)

## 海域範圍折點坐標

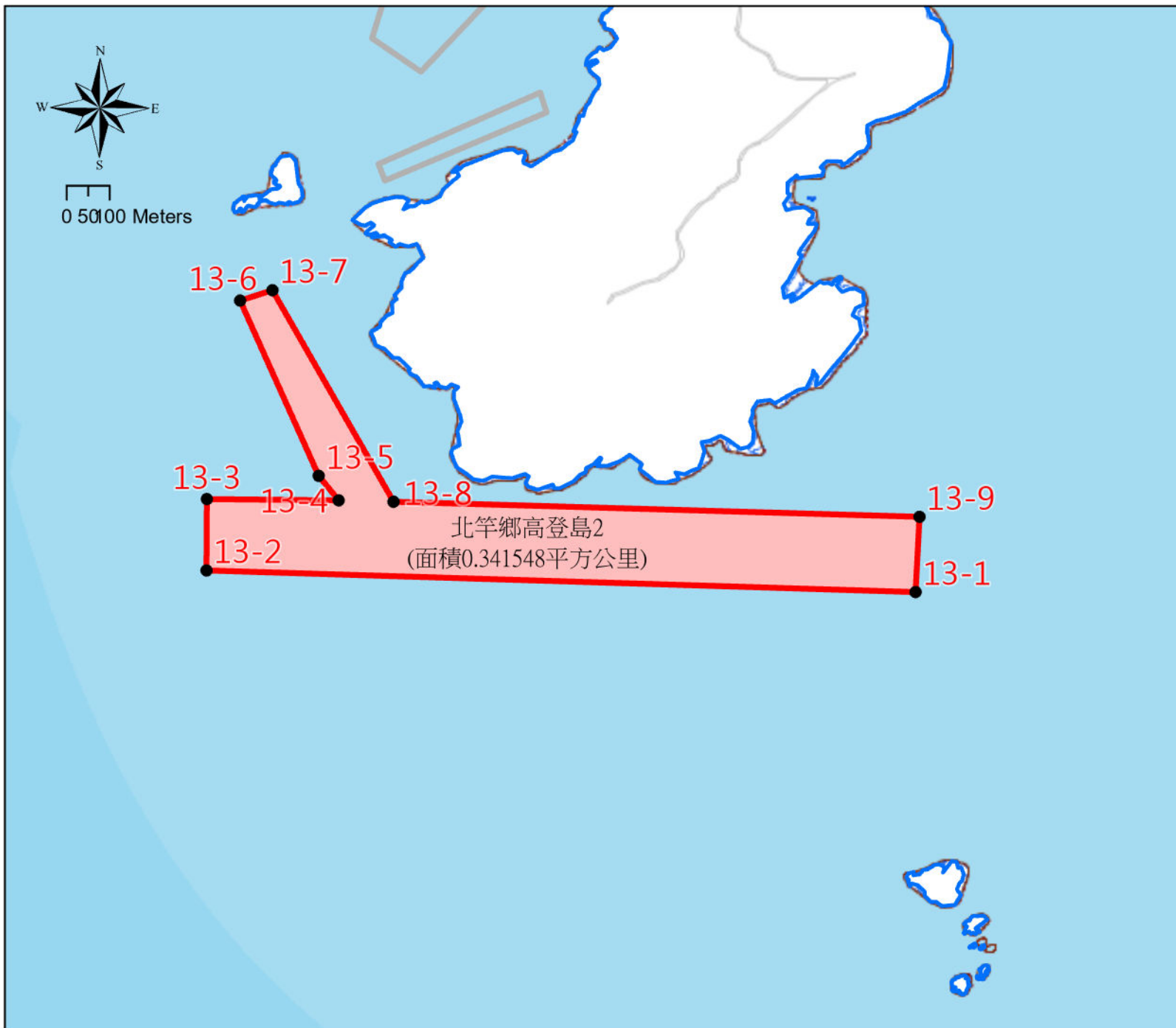


折點編號	N	E
12-1	26° 16' 30.5" N	119° 58' 47.8" E
12-2	26° 16' 33.0" N	119° 58' 43.68" E
12-3	26° 16' 47.5" N	119° 58' 48.47" E
12-4	26° 16' 53.8" N	119° 58' 53.95" E
12-5	26° 16' 51.24" N	119° 58' 56.32" E
12-6	26° 16' 44.44" N	119° 58' 49.63" E
12-7	26° 16' 39.5" N	119° 58' 50.0" E
12-8	26° 16' 36.9" N	119° 58' 54.41" E



# 連江縣區劃漁業權海域範圍圖-編號13(北竿鄉高登島2)

## 海域範圍折點坐標



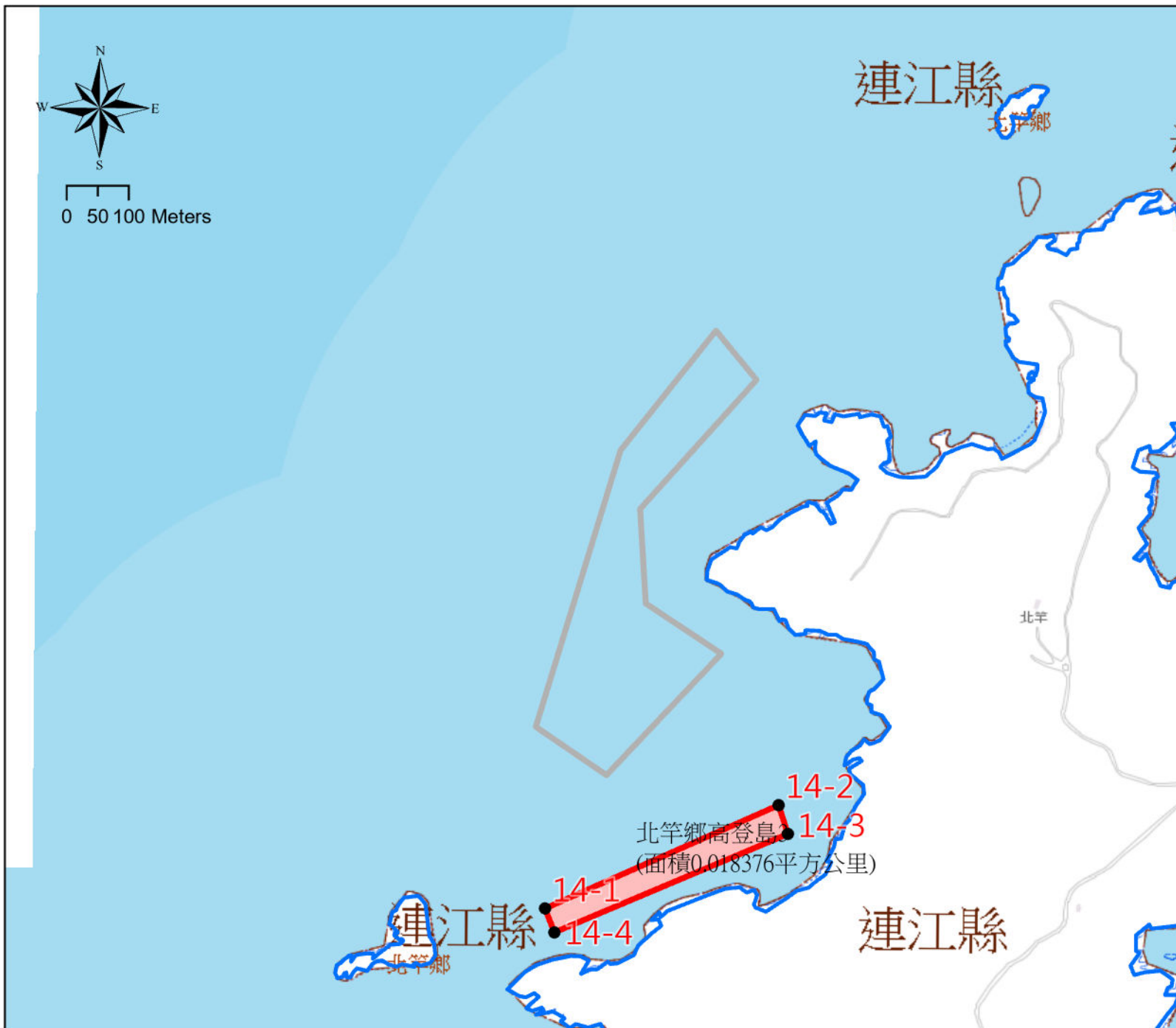
折點編號	N	E
13-1	26° 15' 51.47" N	119° 59' 29.58" E
13-2	26° 15' 52.69" N	119° 58' 30.16" E
13-4	26° 15' 58.06" N	119° 58' 41.19" E
13-3	26° 15' 58.08" N	119° 58' 30.14" E
13-5	26° 15' 59.9" N	119° 58' 39.5" E
13-6	26° 16' 13.1" N	119° 58' 32.8" E
13-7	26° 16' 13.9" N	119° 58' 35.5" E
13-8	26° 15' 57.99" N	119° 58' 45.79" E
13-9	26° 15' 57.16" N	119° 59' 29.86" E

圖例

- ▭ 海域劃設範圍
- 海域劃設範圍折點
- ▭ 平均高潮線

# 連江縣區劃漁業權海域範圍圖-編號14(北竿鄉高登島3)

## 海域範圍折點坐標



折點編號	N	E
14-1	26° 16' 23.5" N	119° 58' 44.3" E
14-2	26° 16' 29.0" N	119° 58' 57.8" E
14-3	26° 16' 27.5" N	119° 58' 58.35" E
14-4	26° 16' 22.25" N	119° 58' 44.85" E

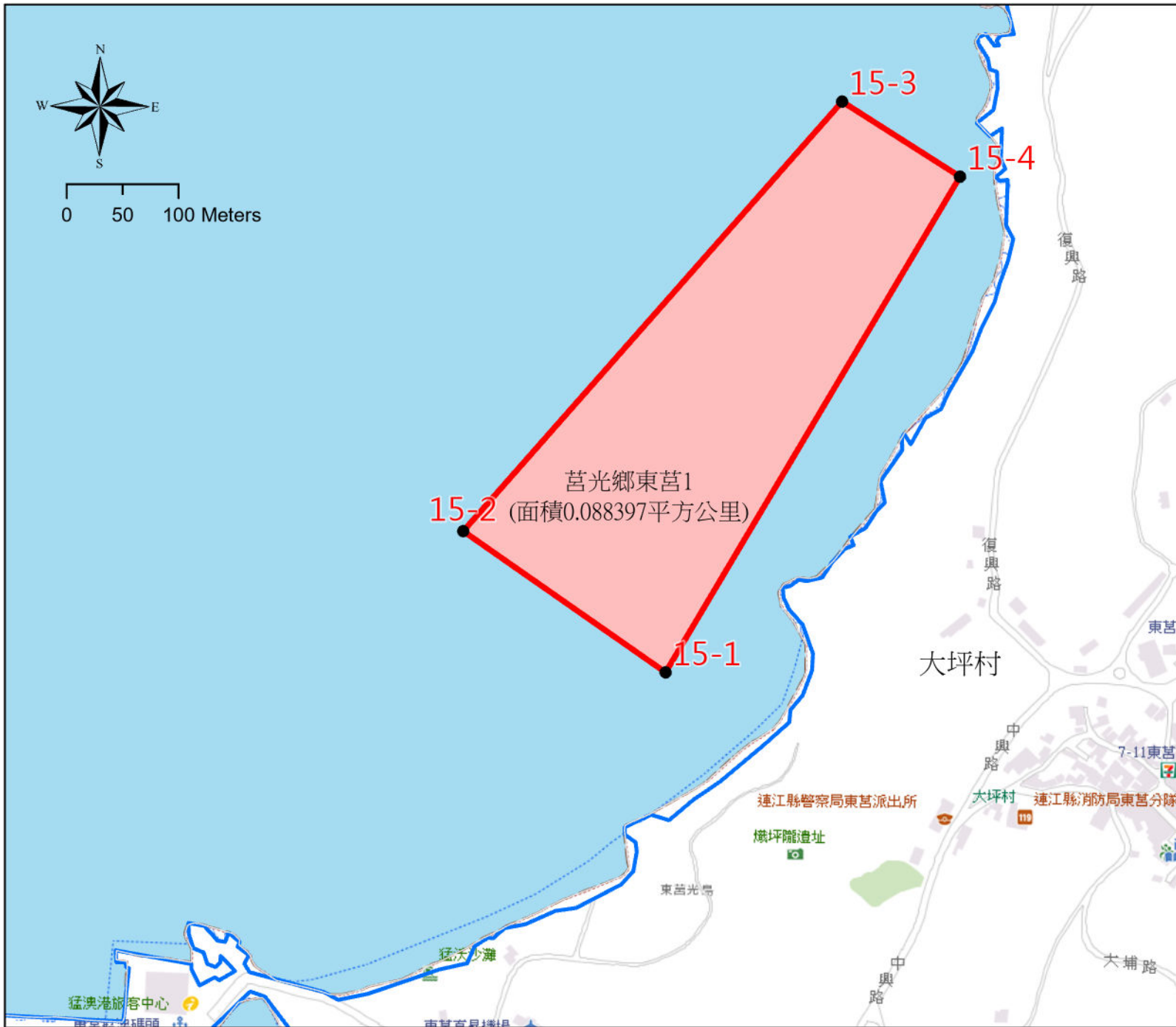
**圖例**

- 海域劃設範圍
- 海域劃設範圍折點
- 平均高潮線

北竿鄉高登島  
(面積0.018376平方公里)

# 連江縣區劃漁業權海域範圍圖-編號15(莒光鄉東莒1)

## 海域範圍折點坐標



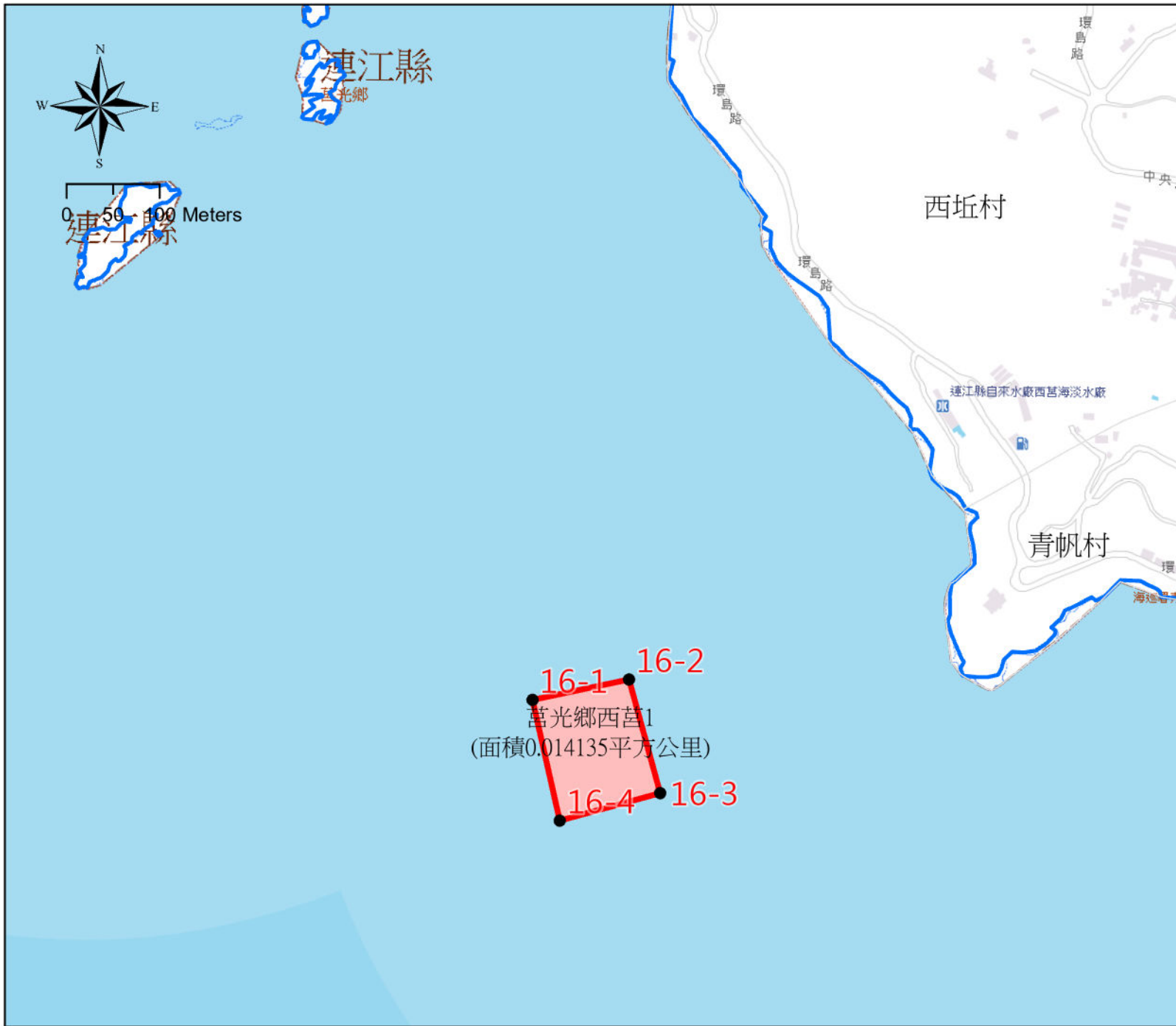
折點編號	N	E
15-1	25° 57' 39.24" N	119° 58' 6.84" E
15-2	25° 57' 43.3" N	119° 58' 0.3" E
15-3	25° 57' 55.88" N	119° 58' 12.37" E
15-4	25° 57' 53.72" N	119° 58' 16.18" E

圖例

- 海域劃設範圍
- 海域劃設範圍折點
- 平均高潮線

# 連江縣區劃漁業權海域範圍圖-編號16(莒光鄉西莒1)

## 海域範圍折點坐標



折點編號	N	E
16-1	25° 58' 14.46" N	119° 55' 27.22" E
16-2	25° 58' 15.2" N	119° 55' 30.94" E
16-3	25° 58' 11.24" N	119° 55' 32.18" E
16-4	25° 58' 10.25" N	119° 55' 28.31" E

